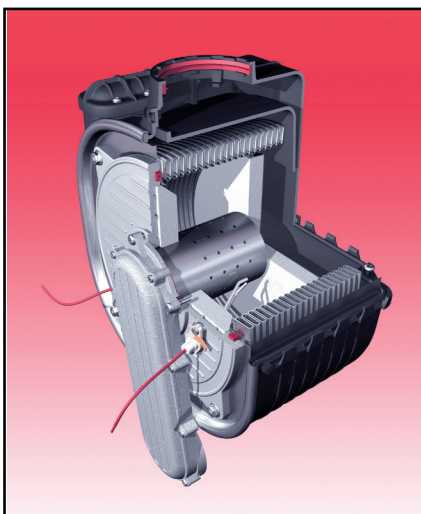




MC Series

Fighting the High Cost of Heating

- *Advanced 21st century space age composite construction provides extra durability and long life in a fully condensing appliance*
- *Quiet operation*
- *Compact design*
- *Light weight plastic cabinet for dent resistance*
- *Ease of serviceability*
- *Fully modulating burner*
- *Up to .95 EF*
- *Stainless steel heat exchanger for higher corrosion resistance*
- *Pre-wired field connections for ease of installation of optional Vision 1, 2 and 3 control systems*
- *Ability to cascade up to 8 heaters*
- *Wall hung with all mechanical connections on bottom of unit*
- *Vents with 2" Schedule 40 PVC pipe*
- *Environmentally friendly*
- *Ultra low NOx emission*
- *Micro-processor control system*
- *Optional Vision 1 provides DHW priority when using the SuperStor Ultra Indirect Water Heater*

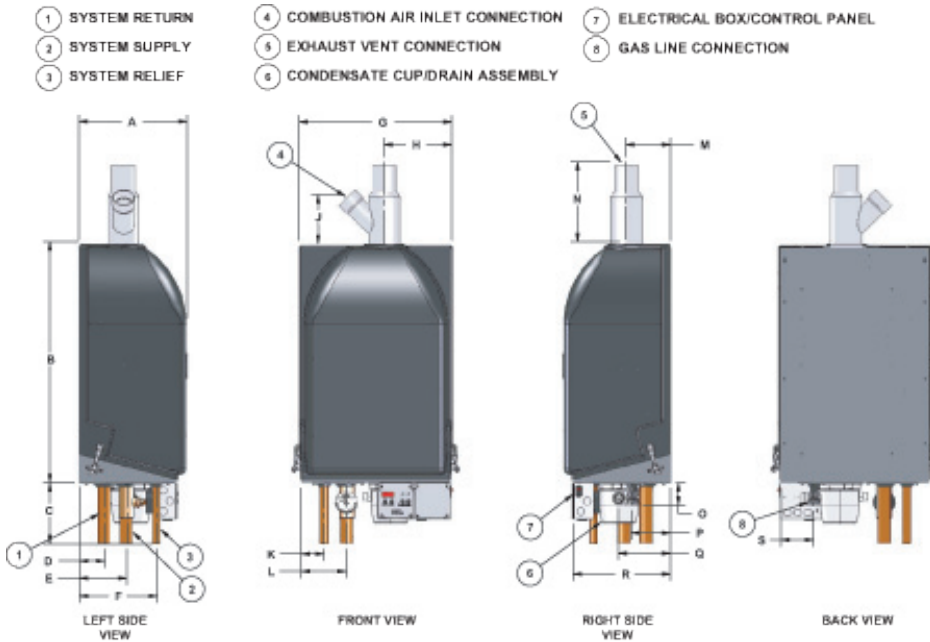


Today's customers are making higher demands regarding ease of operation and energy consumption. High efficiency condensing technology is *the efficient solution*. HTP introduces the 21st century solution, the MC Series Condensing Gas Fired Heater. MC Series heaters are not only easy to install, but are highly efficient and will provide years of service free operation.

The Benefits of Condensing Technology

The major advantage of condensing technology is to extract more heat from the exhaust gas compared to conventional systems. The heat exchanger incorporates a larger surface area, constructed of high quality stainless steel. This additional surface area allows the unit to extract all the latent energy from the combustion process and recapture heat from the water vapor contained within the exhaust gas. Condensing heaters extract so much heat that they can be vented with standard plastic pipe! The MC Series heater burns less gas to produce the same amount of heat as a conventional system.

MC Series Heater Dimensions and Specifications



Standard Features on all models

- Modulating Burner: 3 to 1 turndown
- Two Stage Operation for Central Heating and DHW
- Energy Star Rated
- Direct Vent Sealed Combustion 2" PVC Venting
- 30 PSI Relief Valve
- Direct Spark Ignition System
- High Grade Stainless Steel Woven Fiber Mesh Burner
- Ultra Low NOx Operation
- Low Gas Pressure Operation
- Zero Clearance to Combustibles
- Terminal Strip for Ease of Field Wiring
- Natural to LP Gas Conversion
- Inlet and Outlet Temperature Sensors
- Central Heating Pump Relay w/Freeze Protection
- Wall Mounts Save Floor Space
- On/Off Switch
- 12 Year Limited Warranty
- Alarm Contact
- Digital Operating Control
- LED Display System Operation
- 120 Volt Convenience Outlet for Condensation Pump
- Outside Termination Fittings - Tee 2" and Coupling 2"

Optional Equipment

- Vision 1 - Outdoor Sensing and DHW Priority
- Condensation Neutralization Kit (Part #N1100)
- Side Wall Vent (Part #V500)
- Concentric Vent Kit (Part #KGAVT0501CVT)
- Condensation Pump (Part #554200)

Model Number	BTU/HR Input Low Fire	BTU/HR Input High Fire	A	B	C	D	E	F	G	H	J	K	L	M	N	O	P	Q	R	S
MC50	18,000	50,000	12.50	27.50	7.00	2.75	5.25	9.00	17.25	7.75	5.50	2.75	5.25	5.00	9.00	2.75	4.00	6.50	10.25	4.00
MC80	19,000	80,000	12.50	27.50	7.00	2.75	5.25	9.00	17.25	7.75	5.50	2.75	5.25	5.00	9.00	2.75	5.25	6.50	10.25	4.00
MC99	44,000	99,000	13.50	27.50	7.00	2.75	6.50	10.25	17.25	7.75	5.50	2.75	5.25	6.00	9.00	2.75	7.75	6.50	11.25	4.00
MC120	44,000	120,000	13.50	27.50	7.00	2.75	6.50	10.25	17.25	7.75	5.50	2.75	5.25	6.00	9.00	2.75	7.75	6.50	11.25	4.00

Model Number	Combustion Air Input/Exhaust Vent Connection Size	System Relief Pipe Size	System Supply/ System Return/ Pipe Size	Gas Line Connection	Heater Volume	Energy Factor EF ₁	Approx. Shipping Weight
MC50	2.00	.75	1.25	.75	.58	.93	71 LBS
MC80	2.00	.75	1.25	.75	.67	.93	74 LBS
MC99	2.00	.75	1.25	.75	.96	.95	84 LBS
MC120	2.00	.75	1.25	.75	.96	.95	84 LBS

1 Tested by independent laboratories to 10 CFR 430.23 2005.



120 Braley Road, East Freetown, Massachusetts 02717-0429
 Telephone 800-323-9651 or 508 763-8071 Fax 508 763-5269
 Visit us on line at www.htproducts.com